

THIS DRAWING (OR ANY PART THEREOF) MAY NOT BE COPIED, TRANSMITTED OR DISCLOSED TO ANY THIRD PARTY OR UNAUTHORISED PERSON WITHOUT THE PRIOR WRITTEN PERMISSION OF GILLING DOD ARCHITECTS.

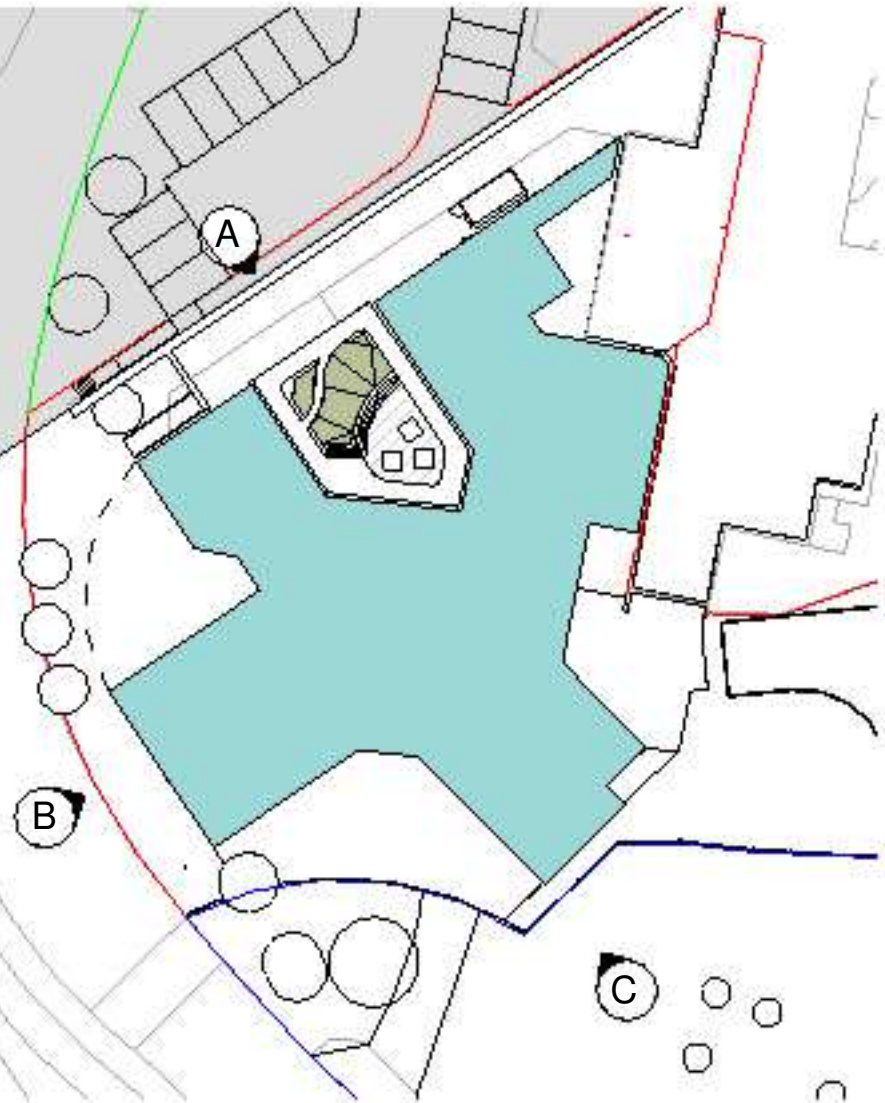
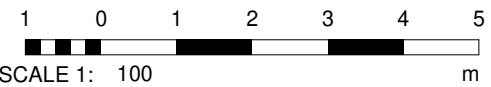
THIS DRAWING IS TO BE READ IN CONJUNCTION WITH ALL OTHER RELEVANT DRAWINGS PREPARED BY CONSULTANTS AND SUB-CONTRACTORS.

REPORT ANY DISCREPANCIES TO THE ARCHITECT OR REPRESENTATIVES THEREOF.

© ALL RIGHTS RESERVED. NO PART OF THIS DRAWING MAY BE REPRODUCED OR TRANSMITTED IN ANY FORM OR BY ANY MEANS WITHOUT THE WRITTEN PERMISSIONS OF THE COPYRIGHT HOLDER

ONCE PRINTED AND DISTRIBUTED THIS DOCUMENT IS ASSUMED UNCONTROLLED

DO NOT SCALE FROM THIS DRAWING. WORK ONLY TO PRINTED DIMENSIONS.



1 Key Plan  
1 : 500

P08	CT	Issued for information. Boundary treatment omitted, see revision cloud	29/09/20
P08	CT	Value Engineering & Planning Issue	18/09/20
P07	CT	Value Engineering Issue	03/04/20
P06	NB	TENDER ISSUE	18/10/19
P05	PLW	Issued for Coordination	30/08/19
P04	CS	Issued for Information	11/07/19
P03	NB	Revised Planning Issue	14/06/19
P02	PLW	Issued for Information	07/06/19
P01	CS	PLANNING ISSUE	24/05/19
Rev	By	Description	Date



The Cruck Barn, Duxbury Park, Chorley, Lancashire. PR7 4AT  
t: 01257 260070 f: 01257 260071

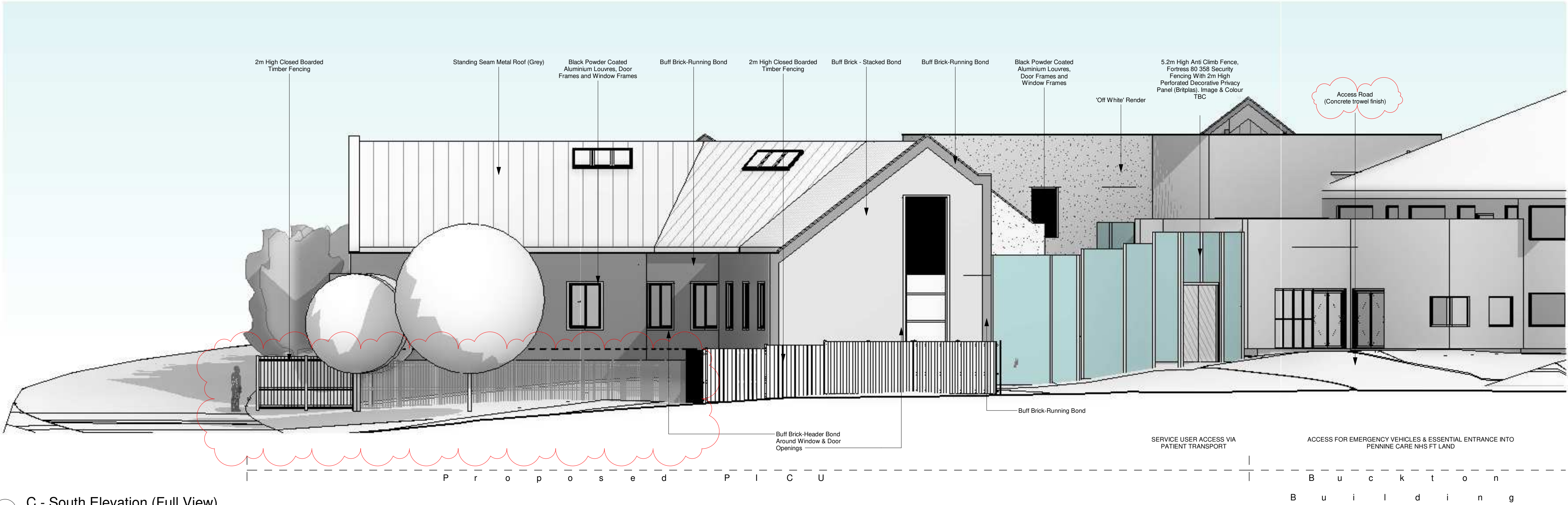
Client Name:  
Pennine Care NHS FT

Site Name:  
Tameside Hospital

Project Name:  
Pennine PICU

Drawing Title:  
Proposed Elevation C

Project No: 8278a	Sheet Size: A1	Scale: As indicated	
Drawn by: CS	Checked by: PW	Approved by: Approver	Revision: P08
Suitability: Suitable for Tender			Status: D2
Drawing Number: TSHPCT-GDA-V1-ZZ-DR-A-05_20-0004			



2 C - South Elevation (Full View)  
1 : 100